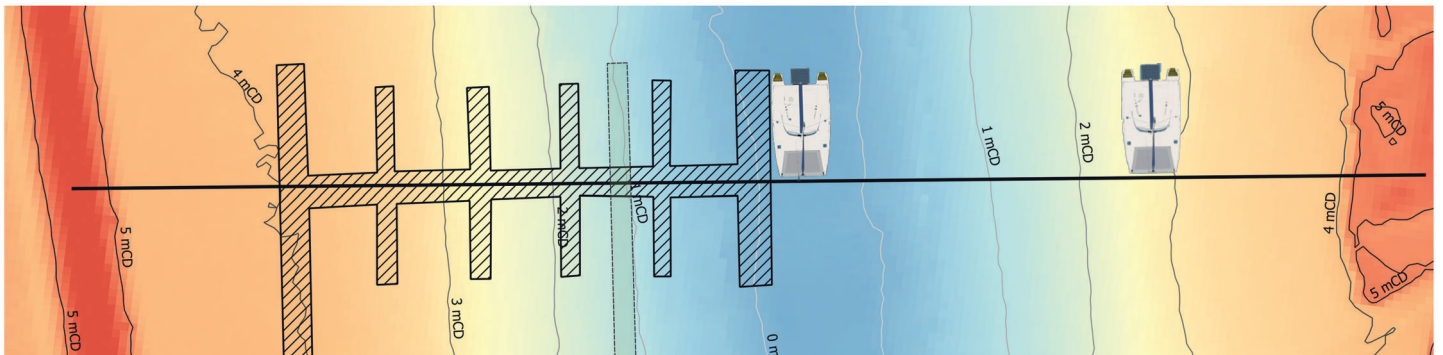
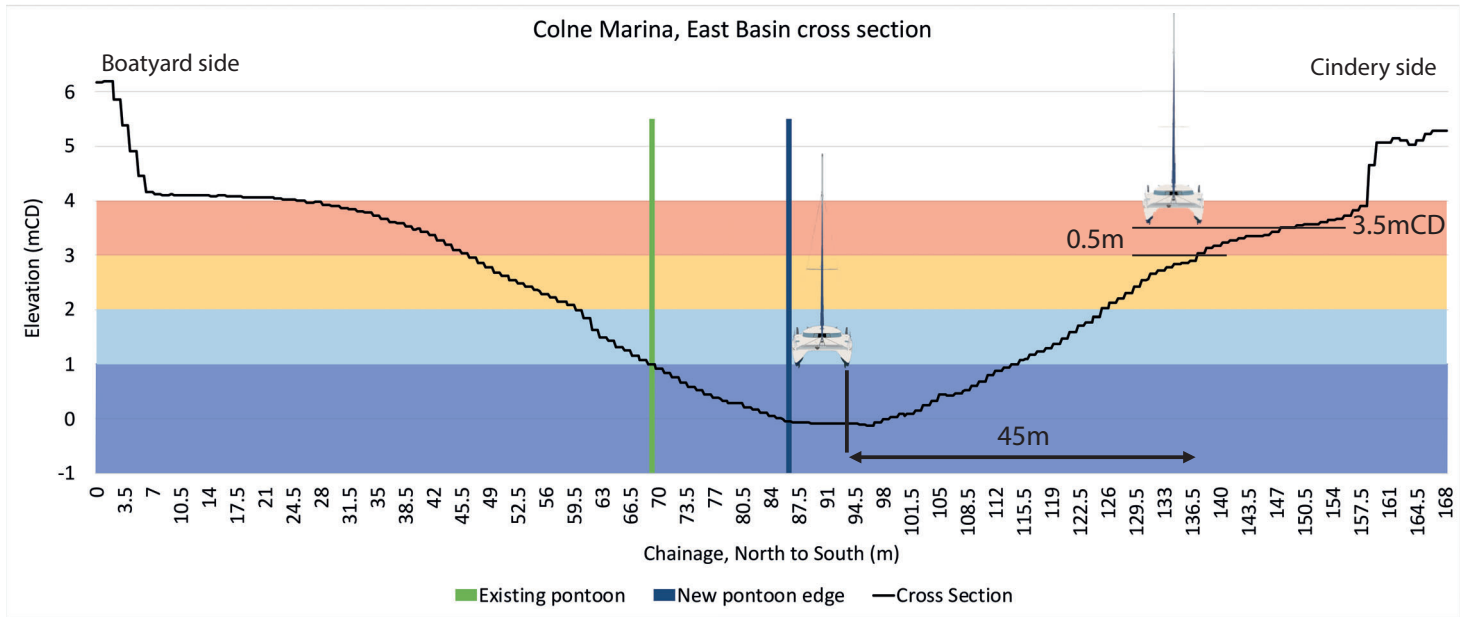


Colne Marina



East Basin Cross Section



Explanation

During the design phase of the Colne Marina the accessibility of the channel has been deliberated in detail and has led to the design as submitted. During low tide (1m CD) vessels can travel no further than 160 meters east because the creek runs dry, that is roughly parallel to the steel wrecks at Underwood's Hard. When the channel becomes more accessible (at 3.5m CD), and the Folly can be crossed, the channel width is more than 45m wide.

Morgan Marine does not plan to put the 7 m wide catamaran on the narrowest point, but this has been illustrated as worst case scenario example. We are confident that all vessels can pass the marina safely to reach their destination at the relevant state of tide.